



DIGITAL ARTS & ENTERTAINMENT

2025-2026

WELCOME GUIDE

Ward Dermaut | Preproduction

dne
DIGITAL ARTS & ENTERTAINMENT

howest
/ hogeschool

WELCOME TO HOWEST

Howest University of Applied Sciences distinguishes itself as an atypical, creative, innovative and enterprising institution. By nurturing talents and passions, our university guides students to become team-oriented, highly-skilled professionals ready for direct employment, equipped to anticipate global societal changes.

We integrate socially relevant, competence-oriented education, research focused on valorization, and service offerings into our portfolio, establishing Howest as a robust “knowledge partner” actively collaborating with regional and international industries.

Our institution embraces openness and pluralism, valuing diversity, and inspires both staff and students to embody our core values of **service, empowerment, and care** in their personal and professional endeavors.

Our goal at Howest is to cultivate the unique talents of each student, accepting them as they are. Grounded in our core values, we prioritize student well-being, addressing individual needs and guiding them towards programs where they can flourish.

Dedicated program teams provide ongoing support throughout the students’ academic journey, fostering a sense of shared responsibility for learning outcomes. Through multi-disciplinary projects and international experiences, we enrich the educational experience, providing valuable opportunities for growth and learning.

[HOWEST
WEBSITE](#)

[HOWEST
INSTAGRAM](#)



HOW TO USE THIS GUIDE

This guide is tailored for **prospective and international DAE students, as well as Belgian students who are new to the city of Kortrijk**. It covers various topics outlined in the clickable table of contents. For further information, please consult the DAE website or reach out to one of the listed representatives.

WELCOME TO DAE

ACADEMIC CALENDAR	14
GRADING SYSTEM	15
COMMUNITY	16
Mental Health	18
Activities & events	20
ETHICS	26
STUDENT SUPPORT SERVICES (STUVO)	28
Working as a student	29
Studentapp	32
CAMPUSES	34

APPLICATION PROCESS & PREPARATION FOR STUDIES

APPLICATION PROCESS	44
Application deadline	45
Final registration	46
STUDY FINANCES	46
HOUSING	48
A FEW TO-DO'S	52
Laptop	54
Drawing tablet	55
Kick-off (Orientation week)	55
Best time to arrive in Kortrijk	56
INTRODUCTORY COURSES	56

LIFE IN BELGIUM

FACTS ABOUT BELGIUM	60
TRAVELING TO BELGIUM	66
WHAT KORTRIJK HAS TO OFFER	70
Design	74
Culture	76
Music	78
Sport	80
Shopping	82
COST OF LIVING	86
MOBILITY	88
USEFUL INFORMATION	91
Climate & clothing	92
In case of illness	94
Addresses & websites	95
Addressing lecturers	95
Sorting waste	96



1
**WELCOME
TO DAE**



WELCOME TO DAE

Dear international student,

Choosing the game or film industry as a career is a dazzling adventure, and we are glad that you chose the **Bachelor of Digital Arts and Entertainment (DAE)** programme as the start of that journey. Here at DAE we believe in excellence and believe that it takes extraordinary effort to develop extraordinary people. You will find DAE to be challenging but ultimately rewarding as it shapes you, your skills and your knowledge into the Digital Entertainment Professional of the future.

At DAE we are strong proponents of a positive, inclusive atmosphere, one in which we hope that you can find a second home. Our bustling community will set you up to make friends for life, creating memories that will stay close to your heart. And when you ultimately extend your wings into the industry, our strong alumni network will keep you connected all over the globe.

You have quite a road ahead of you, and you undoubtedly will have many questions. Higher education is one of the most formative moments of your life, but don't fear – We are here to guide you, just like this guide is here to assist you in moving into a new country and settling into your new home.

We are looking forward to welcoming you at DAE!



Regis Le Roy
Academic Director

INFO
DAYS DAE

COURSE
OVERVIEW

WELCOME TO DAE

LET THE GAMES BEGIN.

Digital Arts and Entertainment (DAE) has been awarded multiple times as the best game design and development program in the world since its creation in 2006. We also excel in the fields of 3D animation and special effects. Ultimately, the **3-year bachelor's degree** in Digital Arts and Entertainment is internationally among the absolute top.

The DAE program at Howest is highly respected worldwide for its focus on game design, 3D animation, and special effects. The degree stands as a pinnacle of international education, **offered in both Dutch and English** to cater to its global audience. **Our mission centers around cultivating versatile technical artists primed to meet the current demands of the gaming, VFX, or animation industry.** Contrary to common misconceptions, prior expertise in programming or 3D expertise isn't mandatory to enter DAE, although having some prior knowledge of math or graphic software can be beneficial.

At the beginning of your studies, students can choose one of the **6 majors** that ultimately determine the direction taken within the programme. Depending on this choice, the focus is either on **artistic skills** (3D modeling, animation, character design, level design, etc.) or more **technical skills** (game engine programming, scripting, rigging, implementing game logic, artificial intelligence, etc.).

WORK HARD, PLAY HARD!

Digital Arts and Entertainment is a challenging program where hard work, passion, and positivity are crucial for success. Graduates land in the most prestigious studios worldwide, start their own businesses, or apply their innovative knowledge in other sectors. Central to this is teamwork, which we cultivate at campus 'The Level', the home of DAE.

Studying at DAE is more than attending classes, completing assignments, and working on group projects: you become part of a vibrant international community of people who share the same passion. The DAE community stands for a culture of openness, inclusion, and mutual respect both in and outside of classes. We value not just creativity and collaboration, but also your mental well-being, with support systems in place to help you thrive.

STUDYING AT DAE MEANS:

- Comparatively low tuition fees.
- The opportunity to dwell in the small, secure & picturesque historic city of Kortrijk.
- High quality university in the heart of Western Europe.
- Possibility to explore neighboring European countries - UK, France, The Netherlands & Germany.





INTERNATIONAL FOCUS

Since its establishment, DAE has maintained an international focus. The entertainment industry is inherently global, so integrating an international perspective into the program is natural and part of our DNA.

This is ensured not only by the 500+ international students from 60+ countries but also by the guest speakers we invite, our international DAE colleagues, the study trips we organize, and the international network of companies and partner schools we have, ...

- **STUDY TRIPS** to the UK, USA, Japan or Canada;
- **STUDY SEMESTER** at one of our partner universities abroad;
- End-of-studies **INTERNSHIP** in Belgium or abroad to explore the industry and kickstart your career;
- Start building your **INTERNATIONAL NETWORK** by meeting students from all over the world.

TECHNOLOGIES USED

Autodesk Maya	
Autodesk 3D studio MAX	
Blender	NET
Arnold	Zbrush
Houdini	After Effects
Unreal Engine 4	Adobe CC
Unreal Engine 5	Framework (C#)
Davinci Resolve	Python
Quixel Megascans	Blackmagic Fusion
phpMyAdmin	Microsoft Visual Studio
Pixel Farm	Enterprise
Sketchfab	Processing
Wacom Intuos Pen Tablet	DirectX SDK
Optitrack Motion Capture	Unity
Geogebra5	MySQL
C++	WebGL
GLSL	HLSL
GIT	HacknPlan
Open GL ES	Wwise
Substance Designer	Nuendo
Ftrack	JUCE
Photoshop	Lua
Premiere	Cockos Reaper
	Substance Painter



ACADEMIC CALENDAR

2025

01.07 - 15.08	SUMMER BREAK (Campuses/Student Admin. Office closed)
30.08	Open Day at ‘The Level’ (Welcome Gathering for Internationals)
01.09 - 12.09	DAE Introductory Courses (first-year students only)
15.09 - 19.09	DAE Orientation Week (mandatory)
22.09	START - DAE Classes
27.10 - 01.11	AUTUMN BREAK
22.12 - 31.12	WINTER BREAK

2026

01.01 - 03.01	WINTER BREAK
05.01 - 31.01	Exam period*
02.02 - 07.02	INTER-SEMESTRIAL BREAK

* Please check the end dates of the exam period carefully before you book your return tickets home. Do keep in mind that the second chance exams (re-assessments) take place in what we call ‘third exam period’ in August.

5 HOLIDAY PERIODS

27.10.2025 01.11.2025	AUTUMN BREAK
22.12.2025 03.01.2026	WINTER BREAK
02.02. 2026 07.02. 2026	INTER-SEMESTRIAL BREAK
06.04.2026 18.04.2026	EASTER BREAK
01.07.2026 16.08.2026	SUMMER BREAK

ADDITIONAL PUBLIC HOLIDAYS

01.11.2025	All Saints’ Day
11.11.2025	Armistice Day
06.04.2026	Easter Monday
01.05.2026	Labour Day
14.05.2026	Ascension Day
25.05.2026	Pentecost Monday
21.07.2026	National Day

GRADING SYSTEM

Howest University of Applied Sciences uses the Flemish grading system of 0-20, with intervals of 1 point. The are no half points.

- 0-9 are **failing grades**;
- 10-20 are the **passing grades**;
- 17+ are beyond excellent and **very hard to obtain**.

16+ The student masters the skill(s) to an **exceptional degree**.

14-15 The student masters the skill(s) to the degree that the student **distinguishes themselves**.

12-13 The student masters the skill(s) **more than sufficiently**.

10-11 The student has acquired the skills to **work in a professional environment**.

7-9 The student has **not yet sufficiently acquired** the skills to work in a professional environment.

0-6 The student has **not sufficiently acquired** the skills.

COMMUNITY



Wout Gheysen
Community Engagement
& Technology Officer



Isabelle Tassaert
Community Coordinator



Sofie Ramis
Community Creative Admin

Studying at DAE entails much more than just attending classes, completing assignments, or participating in group projects. **We aim to create a platform where students can pursue their hobbies, engage in sports, and share their passions with like-minded individuals.**

From the moment students become members of DAE, they join the Community - a vibrant, international community where they are free to participate in a wide range of activities organized weekly, semi-annually, or annually. **'Study Nights', student-led workouts and workshops, cosplay events, and more.**

Connecting students, developing their talents, and nurturing their creativity are the primary goals of the community. We also actively engage with broader social topics, promote diversity and inclusion, and create space for conversations around mental well-being and loneliness.

Building and maintaining a social network will not only help students realize their potential but can also serve as a support system in difficult times.

Questions?

Click on the picture of the person of the Community Team you'd like to contact.





COMMUNITY

BEYOND THE FUN.

While we love organizing workshops, cosplay events, and game nights, the Community Team is also here for the not-so-fun stuff, the things that matter deeply, but aren't always easy to talk about.

MENTAL HEALTH

University life can be intense, and we know that sometimes it gets overwhelming. Whether you're feeling stuck, lonely, or just need someone to talk to, we're here.

The Community Team is always a listening ear, and we'll gladly help you find the right support. From friendly chats to connecting you with STUVO's student psychologists or other support services, you're never alone in this!



INCLUSIVITY & DIVERSITY

Everyone deserves to feel safe, seen, and supported. That's why we're committed to building an inclusive community, where every voice matters, and every student belongs. **These are some of the initiatives you can find at DAE:**

The **LGBTQIA+ Community** at DAE is student-led, with members organizing meet-ups, small events, and activities such as pin designs. They also offer training and workshops in collaboration with 'Cavaria', ensuring a space for learning, support, and celebration of diversity.

Dames of DAE provides a welcoming space for female and female-identifying students to connect and share experiences in a male-dominated field. While the focus is on supporting these students, everyone — including non-binary, trans, and male students — is welcome to join. It's all about building community and fostering inclusive conversations.

KARAVAAN

Karavaan is a student-led initiative, developed together with the Howest Community and STUVO, that focuses on important topics such as mental well-being, boundaries, identity, discrimination, and work-life balance.

By bringing these issues to the forefront and encouraging open discussions, **we aim to create an inclusive and supportive environment where all students can thrive.**

An overview of **a few campaigns organised last year:**

Flag-IT

A visibility campaign aimed at breaking the taboo around cross-boundary behavior. Through symbolic flags on campus, we spark discussions about cross-boundary behavior, racism, and discrimination. By joining our hands-on bystander training you can learn how to respond effectively,

Brighter Together

This campaign focused on combating loneliness and creating a space for students to connect. Through shared activities, workshops, and casual meet-ups, it's all about building a supportive community where everyone feels welcome.

At DAE, we believe in creating a positive and open-minded community, and that's exactly what 'Karavaan' is about.





ACTIVITIES & EVENTS

ONLINE DISCORD COMMUNITY

We operate 'DAE ACTIVE,' our community server, to keep students updated on **events and activities through weekly announcements**. It's a hub for students with shared interests, providing a platform for sharing work and receiving feedback, along with opportunities for exchanging, selling, or discussing items and accommodations.

Student will be invited to the server during the Orientation Week in September.

STUDY NIGHTS WEEKLY ON THURSDAYS

Originally launched in 2012 by an enthusiastic international student, Study Night has become a beloved weekly event for DAE students, entirely led and organized by a group of students, called the 'Study Night Team'. Every Thursday evening, students from diverse backgrounds gather to collaborate, study, and connect.

What to expect?

Collaborative Learning:

Study Night provides a supportive environment for students to work on assignments, engage in workshops or guestlectures, and seek academic assistance from peers.

Extracurricular Activities:

In addition to studying, students have the opportunity to unwind and socialize. Whether it's playing board games, making music, or simply mingling at the bar, there's something for everyone to enjoy.

Special Events:

Throughout the year, the Study Night Team organizes special events to add excitement to the academic calendar. From pumpkin carving on Halloween to festive holiday parties, there's always something fun happening at DAE.



CLUBS & ACTIVITIES DURING THE WEEK

Our commitment to the students deserves a place where they feel valued, supported, and empowered to pursue their passions. By providing a wide range of club and activity options, encouraging students to take initiative and create their own clubs, we ensure that there truly is something for everyone at DAE.

Our student clubs and activities are as diverse as our student body, offering something for everyone. From 'Magic: The Gathering' to chess, from sports to gaming, theater and drawing, and many more... if you can dream it, you can create it. These clubs provide the perfect opportunity to **connect with like-minded peers during your studies.**

We encourage students with a passion or interest that isn't represented yet, to start their own club by contacting the Community Team. We believe in empowering our students to take initiative and create the community they want to be a part of. Whether it's a niche hobby or a groundbreaking idea, we're here to support you every step of the way.



GUILDS THROUGHOUT THE YEAR

Guilds serve as focused communities within our larger network, uniting individuals around specific topics or fields to share knowledge and inspire creativity.

'Camelot' - A community of audiophiles passionate about sound creation and manipulation, dedicated to inspiring and assisting others in mastering the art of audio.

'Level Up' - A platform for artists to hone their skills in concept art and illustration, fostering growth and creativity in visual storytelling.

'The Forge' - An inclusive space for Unreal Engine enthusiasts to collaborate, offering support and resources for crafting immersive environments and experiences.

'The Hardcore Surface Guild': Focuses on hard surface artistry, exploring topics such as architecture, vehicles, and weaponry using diverse software and techniques.

'The Sandbox' - A collaborative hub for game designers and developers to prototype, innovate, and share insights, fostering growth in game development.

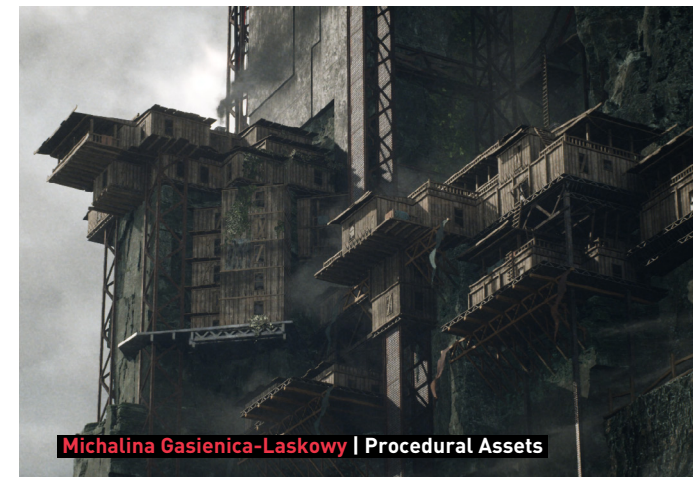
'ZGuild' - Committed to mastering real-time 3D character creation, offering daily activities and weekly meetups to explore AAA character design techniques.



Vivien Siemers | Stylised Creation



Theoni Fotoglou | Animation 2



Michalina Gasienica-Laskowy | Procedural Assets

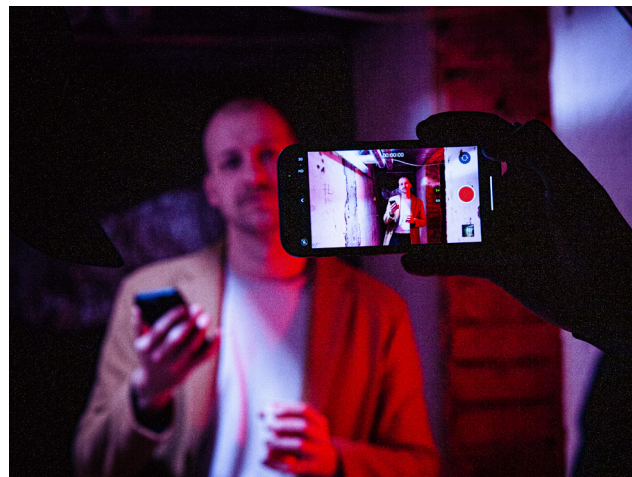
CREAWEEK YEARLY

At DAE, Creativity Week (Creaweeek) is more than just a break from routine—it's **an opportunity for our students to explore, innovate, and showcase their talents.**

During the second semester, we unleash the creativity of our students with workshops given by DAE staff and lecturers, covering a diverse range of inspirational topics that extend beyond our regular curriculum. These **workshops** are specially curated for **first-year students** and include activities such as building a nerf gun, augmented reality workshops, sculpting in foam or clay, Kinect workshops, stop motion, 3D scanning, theatre, and practicing stage and VFX makeup and many more!

In the second semester, Creativity Week transforms into a thrilling experience for **second-year students**. Instead of regular classes, they dive into the exhilarating world of **game/film jams**. In teams students race against the clock to create their own game or short film in no more than three days!

Furthermore, we actively encourage and support our students' participation in various game jams and competitions, both locally and internationally. For instance, DAE teams have garnered multiple awards at events like Brains Eden, the UK's largest international game jam held in Cambridge.



UNWRAP FESTIVAL YEARLY

The **Unwrap Festival** in Kortrijk is a multi-day event celebrating games, technology, and digital creativity. Organized with the support of 'Flanders Game Hub', it features industry talks, workshops, networking opportunities, and showcases of student and professional work.

The festival brings together game developers, artists, and innovators, making it a key gathering for the gaming and creative tech scene in Belgium.

[UNWRAP
WEBSITE](#)



SILENT STUDIO PERMANENT

Looking for a place to jam?

The DAE Silent Studio is a **fully equipped music room** where you and your friends can play without disturbing others. With instruments set up and ready to go, all you need to do is plug in and start playing.

Access and booking information will become available after the 'Orientation Week' in mid-September.



ETHICS

Our community is by and for the students. With the support of a Community Team, we pledge our dedication to maintaining **a campus culture of openness, inclusivity, acceptance, and connection for our students**. Each of us brings a different story to DAE - we look forward to hearing yours.

We choose to emphasize the importance of ethics through both the integration of the DAE Mission Statement, the course 'Career Skills,' the 'Game for Thought' livestream series, and several initiatives supported by our team that demonstrate a commitment toward inclusivity and belonging.

These initiatives include organization of guest lecturers regarding topics such as neurodiversity and accessibility, our semestrial 'Dames+ of DAE' meet-ups (with the goal of bringing female-identifying students together across majors), and an active collaboration with our 'LGBTQ+ at DAE' student organization. Our staff also works closely together with our Student Support Services (STUVO) team to provide guidance in light of cross-boundary behaviour.



Allie Weis
Ethics Coordinator in
International Game Development

[PODCAST
SPOTIFY](#)

[YOUTUBE
CHANNEL](#)

[TWITCH
CHANNEL](#)

GAME FOR THOUGHT

'**Game for Thought**' is a monthly video/podcast series hosted by Howest DAE since 2020, **addressing ethically-relevant topics in the games and digital entertainment industry**. Follow us on Youtube and Spotify as we tackle a different topic each month, such as discrimination and representation in games, crunch time and well-being, sustainability, inclusivity and user experience, and more!

We take our commitment to ethics seriously, both in education and in the industry itself. We choose to give it our full attention, knowing that both ourselves and our work will benefit from it.



STUDENT SUPPORT (STUVO)

The **Student Services Services (STUVO)** is a professional and free service that provides all students of Howest and UGENT (campus Kortrijk) with **the opportunity to study in optimal conditions** and aims to make life at the college or university **exciting, pleasant, and carefree**.

[WEBSITE
STUVO](#)

[INSTAGRAM
STUVO](#)

[EMAIL
STUVO](#)

Students can turn to STUVO for:

- Study grants
- Student financing
- Social-legal advice
- Psychosocial support
- Individual support
- Social services
- Group training sessions by 'Psywest'
- Special status & facilities
- Housing
- Mobility
- Study coaching
- Assistance with study choices
- Cultural or sports events & activities
- ...

STUDENT COUNSELING

Howest wants to offer all talents the opportunity to develop at the fullest. For **special-status students** (e.g. students with a disability, students with children or with a top-sport status), we provide extra support, such as:

- **Special-need software** (for students with learning disorders)
- **Adaptations** (facilities) for those who need it
- **Intensive support** of students with special needs
- **Wheelchair accessible** student rooms

[EMAIL
STUDY COACH](#)

WORKING AS A STUDENT

Students are allowed to work during their studies. However, considering DAE's demanding curriculum with numerous assignments and deadlines, it's challenging to balance with a significant workload. Working more than a few hours per week or on weekends can be difficult to manage.

For further details regarding the regulations for student employment:

[STUDENT AT
WORK WEBSITE](#)



STUVO CONNECTS

Building a future requires connection!

At Stuvo Connects, we understand the importance of connecting with others for every student. We provide new opportunities to **meet like-minded individuals** and encourage sharing of interests.

Our focus is on fostering a positive mindset while offering a range of activities, created by and for students, with an **emphasis on community and well-being**.

[WEBSITE](#)
[CONNECTS](#)



'DE LIVING'

Hosted by STUVO, 'De Living' is your cozy living room and meeting space at Howest, a place where everyone can feel at home, be themselves, and connect with others.

It's a central hub where students come together for fun and meaningful activities, organized by and for students. The space also regularly hosts events by Karavaan, a student-led initiative that promotes well-being, inclusion, and connection on campus.

Need a quiet moment? You're also welcome to relax, read, study, or play a board game in our calm corner. Everyone's welcome, so drop by for a chat, make new friends, or simply enjoy the warm atmosphere.

We can't wait to meet you!

[PSYWEST](#)
[WEBSITE](#)

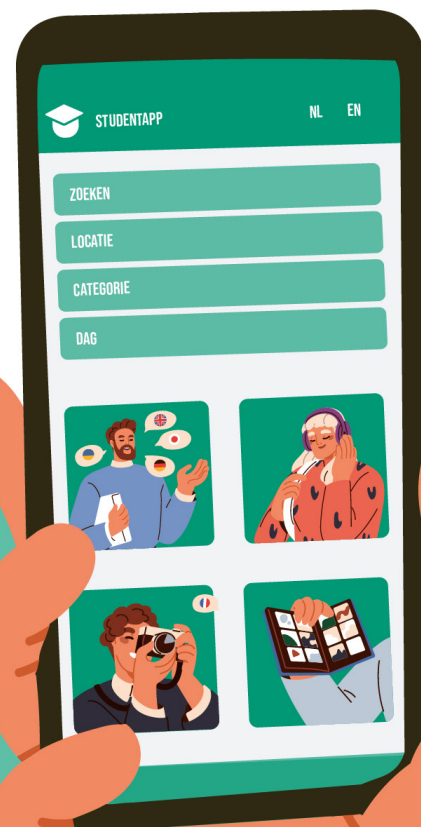
PSYWEST

Adjusting to a new environment can be exciting but also overwhelming at times! To support you, Psywest offers **free info sessions, workshops, and trainings designed to help you take care of your mental health, build resilience, and feel more at home**. In addition to the free sessions, there are also extra options available at affordable student prices.

These activities are brought to you through the collaboration of local student support services, making sure you have access to the help and guidance you might need along the way. All available Psywest sessions are **listed on StudentApp, so you can easily browse what's available and sign up for anything that interests you**.

STUDENTAPP

FIND ALL THE ACTIVITIES IN
YOUR NEIGHBOURHOOD
WITH STUDENTAPP!



STUDENTAPP

StudentApp is an **online platform that helps students in West-Flanders easily access a wide variety of leisure activities**. It is designed to enrich your student life by **offering fun, affordable ways to stay active, explore culture, and meet new people**, without the hassle of searching for opportunities yourself.

What can you expect?

Activities organised into unlockable programmes that are easy to browse and filter by city, category, or time. Whether you want to relax with a cultural event, stay active with sports, or meet fellow students through social outings, there's something for you.

There are two levels of access:

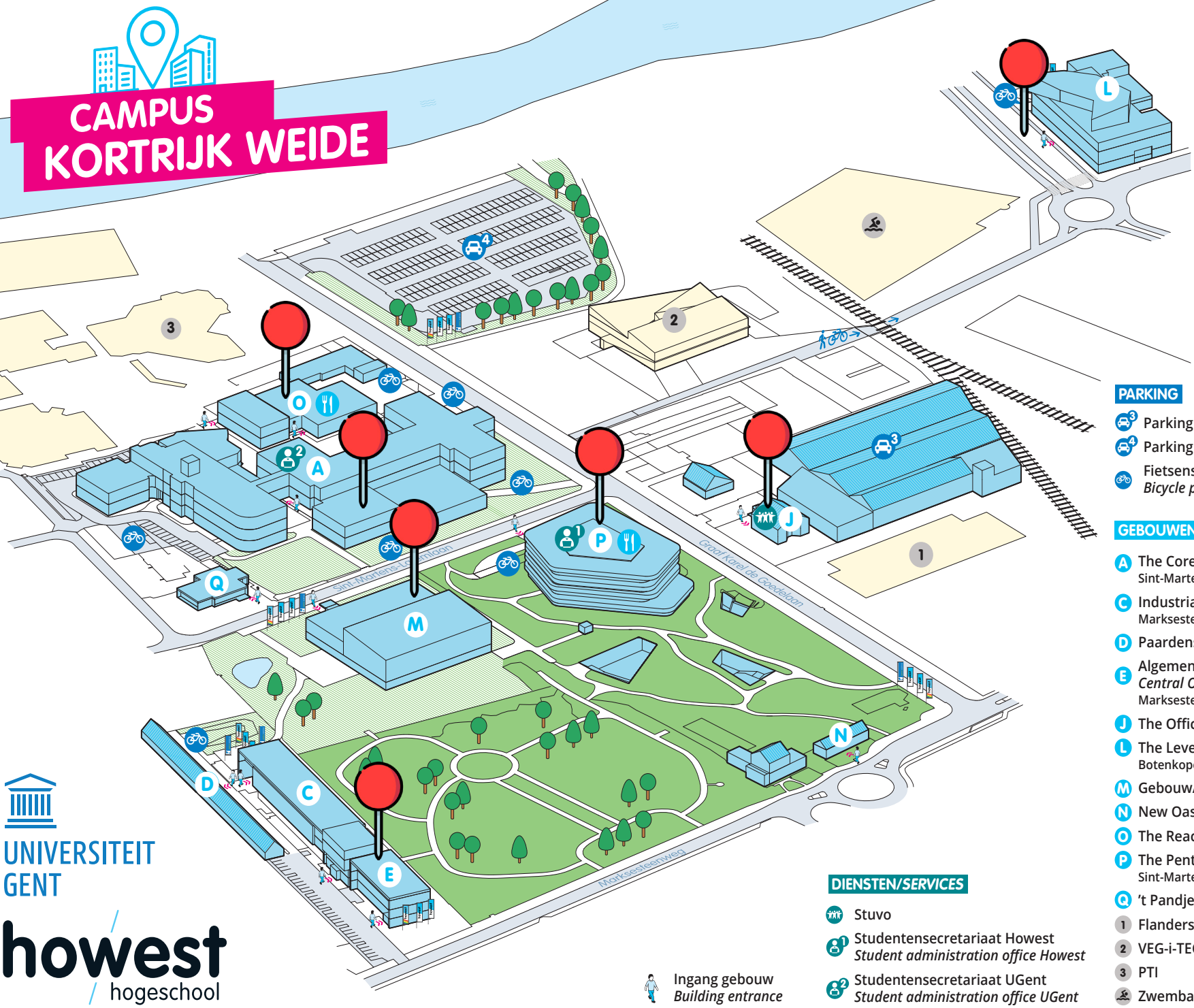
- 1 Free registration** (with your student email)
Gives you access to a variety of free activities. This is perfect for trying out different things at no cost.
- 2 StudentApp Pro** (€ 20/semester):
For a small fee, you unlock extra benefits like free or discounted access to swimming, yoga, fitness classes, and more. Ideal if you're looking for a well-rounded and affordable way to stay active throughout the semester.

How to get started

Once you receive your student email address, you can register for free on their website. From there, you can explore activities and upgrade to StudentApp Pro at any time if you wish.

**STUDENT
APP**

**FAQ
APP**



CAMPUSES KORTRIJK

Campus Kortrijk - Weide (KWE)

LETTER BUILDING	NAME BUILDING	CODE	ADRESS
A	The Core	KWE.A	Sint-Martens-Latemlaan 2B
J	The Office - STUV0	KWE.J	Graaf Karel de Goedelaan 32
L	The Level	KWE.L	Botenkopersstraat 2
O	Obee / Reactor	KWE.O	Graaf Karel de Goedelaan 5
P	The Penta	KWE.P	Sint-Martens-Latemlaan 1B
E	Algemene Diensten	KWE.E	Marksesteenweg 58

Campus Kortrijk - The Square (KSQ)

-	The Square	KSQ.S	Luipaardstraat 12A
---	------------	-------	--------------------



Restaurant - Plaza

Breakfast 7:30 AM / **Lunch** 11:45 AM - 1:30 PM

- Microwaveable takeaway lunches
- Customizable plate from the salad bar
- Sandwiches
- Hot snacks
- Pastas
- Soups
- Desserts

* Certain hot snacks only available upon order before 9:30 AM.
Order sandwiches before 9:30 AM to get your preferred choice.



Restaurant - 't Obeetje

Breakfast 8:15 AM / **Lunch** 11:45 AM - 1:30 PM

- Daily Special (veggie included)
 - Pasta
 - Salad Bar
 - Sandwiches
 - Hot Snacks
 - Desserts
- (fries, sausage, cheese croquette, hamburger, croque-monsieur, panini, etc.)



The Level



Campus - The Square

This campus is at a 16 min. bikeride from our campus 'The Level'.

THE OASIS



Address

Sint-Martens-Latemlaan 1
8500 Kortrijk

The 'Oasis' is **accessible 7 days a week**.
Obtain your access card at the front desk of 'the Level' or 'the Penta'.

It's not a party venue and a few rules apply.
Please adhere to these rules.

The 'Oasis' lounge is open to **all Howest international students and their buddies**.
It has different spaces:

- Lounge with couches;
- Beamer and a kitchenette;
- Quiet and cozy reading room;
- Working space.


It's a versatile space where students can hang out, enjoy a drink, chat, watch movies, relax, study, and work. The 'Oasis' is a space students can personalize and make their own.

Join the Oasis Facebook group for updates and connections with fellow international students.
You'll receive an invitation after being accepted to DAE.





THE
TEL



2 **APPLICATION PROCESS & PREPARATION FOR STUDIES**

APPLICATION PROCESS

GENERAL INFORMATION

For detailed information about the step-by-step application process, requirements, legislation, and document submission, please visit the Howest website:

HOWEST
WEBSITE

Our academic calendar is divided into two semesters. However, students are only admitted at the beginning of the academic year, meaning they can commence their studies in the autumn semester (end of September).

Starting classes in the spring semester is not feasible as second-semester courses build upon the material covered in the first semester.

Please note that Howest University of Applied Sciences will be **closed for summer break from July 20st '24 until August 15th '24**.

During this period, no applications will be processed.

APPLICATION DEADLINE

- **JUNE 1st, 2024**
Students who require a visa to study in Belgium.
- **JULY 1st, 2024**
EU citizens & other non-visa-required applicants.

EMAIL
ADMISSIONS

EMAIL
ADMIN. OFFICE



FINAL REGISTRATION

WHEN

From 1st of July 2023
(until classes commence)
Mon-Fri 8:30 AM - 12:00 AM
1:00 PM - 4:30 PM

WHERE

Howest Student Administration office
Sint-Martens-Latemlaan 1B
8500 Kortrijk
tel. +32 (0)56 28 70 00

You will receive a link that you'll find in the pdf called 'Finalising Enrollment Guide', attached to your '**Letter of Acceptance**' email. You'll need to send a copy of the following documents when registering online:

- A **copy of your identity card** (front and back) or **passport**;
- **Visa** to study in Belgium **or residence permit**;
- **Insurance certificate**;
- **This Certificate of Acceptance**;

REGISTRATION ON CAMPUS

Would you prefer to complete your final registration at the student administration office? **Ensure that you have uploaded all the necessary documents first via your online registration.**

Once all your documents are in order, schedule an appointment at our student administration office. During your appointment, your contract will be drawn up.

STUDY FINANCES

1

TUITION FEES

All information regarding tuition fees for both EU students and non-EU students can be found on the Howest website. Please note that **tuition fees are subject to change annually and vary depending on nationality, academic and financial conditions.**

TUITION
FEES

2

GRANTS & SCHOLARSHIPS

As a Belgian student in higher education, you can receive a scholarship from the Flemish government to pay for your studies. **To be eligible for a scholarship, you have to meet several conditions such as nationality, academic and financial conditions.** You can find more information about the nationality conditions (in Dutch - use Google Translate or ChatGPT).

SCHOLARSHIP
CONDITIONS

Other grants and scholarships

Unfortunately, as a public, government-funded institution, we are unable to offer scholarships. However, many of our international students receive financial aid from official organizations in their home country. Students are encouraged to reach out to the appropriate authorities in their country to inquire about available financial assistance. **More info on how to apply and other study finance options:**

STUDY
FINANCING



PIXELKOT - Howest dorms

- **127 single student rooms**
 - 99 Standard Rooms with personal sink (€ 410)
 - 9 Comfort Rooms with personal sink & shower (€ 465)
 - 19 Comfort+ Room with full personal bathroom (€ 530)
- For students from Howest and University of Ghent: full bachelor students, Erasmus & Exchange students;
- With common kitchen, dining room, showers & toilets;
- Prices include water, electricity, gas & internet;
- Duration of the contract: 12 months.
 - 5 or 10 months for exchange students, only 'Standard Room' available for short term rental agreement;
- Strictly non-smoking.

Next to Howest Campus 'The Level'

Serjenka Rayee

STUVO - Housing & more



[PIXELKOT
WEBSITE](#)

[EMAIL
HOUSING](#)

PRIVATE MARKET

Searching for a student room: the sooner, the better!

Keep in mind that costs vary on the private market, depending on your preferences (shared/private kitchen or bathroom,...). Consider opting for shared kitchen as cooking together and spending time with your roommates is something that you will appreciate during your stay here.

Before signing a lease agreement, ensure that energy/water/internet bills/fire insurance are included in rent and paid by the landlord. If not, the contract should specify how these costs will be calculated.

Please be aware that energy costs can be higher in Belgium than in other countries.

It's recommended to seek accommodation near our campus building 'The Level' for convenience in attending classes and extracurricular activities.

Here are some interesting websites:

- [Kotwest](#)
→ the go-to website to start your search for a dorm in Kortrijk
- [Upkot](#)
→ only for year contracts, no 6 months
- [Student Housing Kortrijk](#)
→ both year contracts and 6 months
- [Kotmatch](#)
→ sublease of students rooms, focus on 6 months students

Remember, it's **YOUR RESPONSIBILITY** to find and arrange accommodation, but our 'Student Support Services' (STUVO) can offer guidance and support during your search.

THE DEPOSIT

Signing a lease contract will require a deposit:

- **Rooms:** a deposit of 1 or 2 months' rent
- **Studios & apartments:** a deposit of 2 or 3 months' rent

The deposit can only be used to compensate for damage to the rented property caused by the tenant (or by third parties to whom the tenant has granted access). The deposit or its balance will be reimbursed within one month after the end of the agreement, taking into account that the landlord should have the opportunity to draw up the final bill for heating, electricity, etc.

The landlord can charge an extra cost if the keys were not returned in time and/or the property has not been cleaned thoroughly. Make sure that you ask for, and keep, the receipt when you pay the deposit in cash.



If you are planning to stay in Kortrijk for more than one day to look for accommodation & finalize your enrollment, we recommend staying at one of the following hostels:

THE RENTAL CONTRACT

There are several types of contracts:

- **Student contract** with a term of **10, 11 or 12 months**
- **Short-term contract**
- **'3, 6 or 9 years'-contract** (used for apartments and houses)

Legally, once the contract is signed, it cannot be terminated before it expires, unless stated otherwise in the contract.

Make sure to have a look at the **'Vlaamse Woninghuurdecreet'** for student tenancy agreements (in Dutch - use Google Translate or ChatGPT).

It is advised to write down spoken promises made by the landlord (e.g. painting the room, renovating the kitchen, etc.), as well as make notes and photos of the individual gas and electricity meter in order to avoid misunderstandings in the future.

YOUTH
HOSTEL

FOCUS
HOTEL



A FEW TO-DO'S

Secure a
**PERMANENT
ADDRESS**

1

REGISTER
at City Hall***

3

Open
**BANK
ACCOUNT**
if needed*

5

2

Register with
**'EXPAT&CO'
HEALTH CARE**
provider**

4

Police visits to
**VERIFY YOUR
ADDRESS**

FURTHER INFORMATION

Visit following links to the Howest website for more info:

[VISA &
INSURANCE](#)

[EMAIL
ADMISSIONS](#)

[CITY HALL,
ADDRESS CHECK...](#)

[EMAIL
STUDENT ADMIN.](#)

*

For **non-EEA students** this step is necessary for the 'blocked account'-process; see information provided by Admissions via email. (Not necessary for EEA students)

**

- **Non-EEA students** must already purchase an Expat & Co insurance before they arrive in Belgium, and they must demonstrate this during enrolment.

- **EEA students** can choose which insurance they take. Most opt for the European Health Insurance.

More information will be sent by the Howest International Coordinator closer to September, **to be completed after your arrival in Belgium**

MORE TO-DO'S

LAPTOP

MANUFACTURER

While selecting a laptop, it is **preferable to aim for specifications that closely align with the recommended laptop specifications mentioned here**, without significant deviations. If you indeed already possess a laptop that closely matches these requirements, you are welcome to bring it to DAE.

SPECIFICATIONS

- **CPU:** INTEL i7 - 12th or 13th gen
AMD Ryzen 7 - 6xxx or 7xxx series
- **GPU:** NVIDIA GeForce -
RTX 3060/4050 minimum
RTX 3070/4060 recommended
- **RAM:** 16GB DDR5
- **STORAGE:** 1TB recommended
+ external drive or cloud storage
- **DISPLAY:** 15.6" FHD/QHD
- **KEYBOARD:** QWERTY recommended

HOWEST PARTNER (Signpost)

Laptops can be purchased through Howest via an external company. For more information, please visit the following [website](#).

Please note that the website will be updated with the recommended laptop for the Academic Year '25-'26, closer to the summer months.

DRAWING TABLET

Whether you need a drawing tablet depends on your major. Here's a quick overview:

- **Small tablet:** Independent Game Production (IGP) & Visual Effects (VFX);
- **Medium tablet:** 3D Anim Production, Game Graphics Production (GGP)

We recommend the following drawing tablets:

- 'XP Pen' - Deco Pro (LW), Gen 2
- 'Wacom' - Pen tablets

XP PEN
TABLET

WACOM
TABLETS

DAE VAULT

The DAE Vault is **a series of online content on Youtube**, tailored to new incoming students with a passion for the interactive and pre-rendered 3D world.

With the guidance of our lecturers, you will discover different topics we teach at DAE. It will encourage you to try out different software and techniques we teach at DAE, which you will see more in-depth if you decide to enrol in the programme.

DAE VAULT
YOUTUBE

KICK-OFF (ORIENTATION WEEK)

WHEN

15-19 September 2025

WHY

The Kick-Off week is **a mandatory introduction to get to know campus life and what's expected academically**. You'll check out campus facilities, and resources, plus get your student card. It's also a great time to meet other students, faculty, and staff, helping you settle in and build a community. Along with helpful tips on adjusting to DAE life, you'll also have a chance to learn about the support services available to you. Attending orientation will give you essential information and skills to make your transition to life in Kortrijk and at DAE a lot smoother.

BUDDIES & PALS

We have the 'Buddies & Pals' project in place to welcome you to Kortrijk and assist you in settling in. You'll be paired with local or international students based on your interests and hobbies in the 'Buddy & Pals' Discord server.

They can guide you around Kortrijk, address your questions, acquaint you with student life, and overall, endeavor to make you feel at home in Belgium.

The link to the Buddy & Pals Discord server will be shared via email before the summer vacation, typically in end of June or begin July.

BEST TIME TO ARRIVE IN KORTRIJK?

If you plan to attend the introductory courses (see next page), we recommend arriving a week before they begin. This will allow you ample time to settle in, complete practical arrangements such as final enrollment, city hall registration (residence permit), and bike rental, as well as make any necessary purchases.

Your **buddies will assist you with this process** and also introduce you to Kortrijk, ensuring you can fully focus on your classes once they commence. Additionally, you'll have the opportunity to enjoy social activities with other new students and buddies without the distraction of practical issues.

INTRODUCTORY COURSES

WHEN

1-12 September 2025

WHERE

The courses take place in-person at our campuses 'The Level' & 'The Penta'.
(it is not possible to follow them online)

WHY

During the first two weeks of September, you will have the opportunity to participate in introductory courses (**Math, Programming, Career Skills & IT Fundamentals, Audio, 3D, Preproduction (drawing), Photoshop**) according to the major you have chosen. During these courses, you will get a head-start on the content of the lessons of the upcoming semester, and you will already receive a solid overview of important topics to expect within the curriculum.

If you enroll in the introductory courses, not only will you become familiarized with lesson content, but you will also have the opportunity to get acquainted with your fellow incoming classmates. What's also special is that **each course is taught by current DAE students**; this way, you're guaranteed useful insights from students who have experienced the curriculum first-hand. Highly recommended!

Each course costs 10 to 20 euro.
(all proceeds benefit student teachers & the DAE Community)

If you are planning to participate in the DAE introductory courses, **make sure to buy your laptop in advance** as it is a necessity for most of the courses. It is highly recommended to order as early as the beginning of July.

SIGN UP
HERE



Hugo Culauto | Asset Design

3

LIFE IN BELGIUM



Kortrijk Weide

FACTS ABOUT BELGIUM

CITY TRIPS

A big advantage of studying in Belgium is that it is located in the centre of Europe, which means it is a perfect starting point for city trips. Some of Europe's prominent cities (London, Paris, Rotterdam, Amsterdam, The Hague and Luxembourg) are all situated within a radius of 300 km from Kortrijk. In 4 hours you can get to London, Frankfurt, Strasbourg or Cologne. Isn't that great?

HISTORIC TOWNS

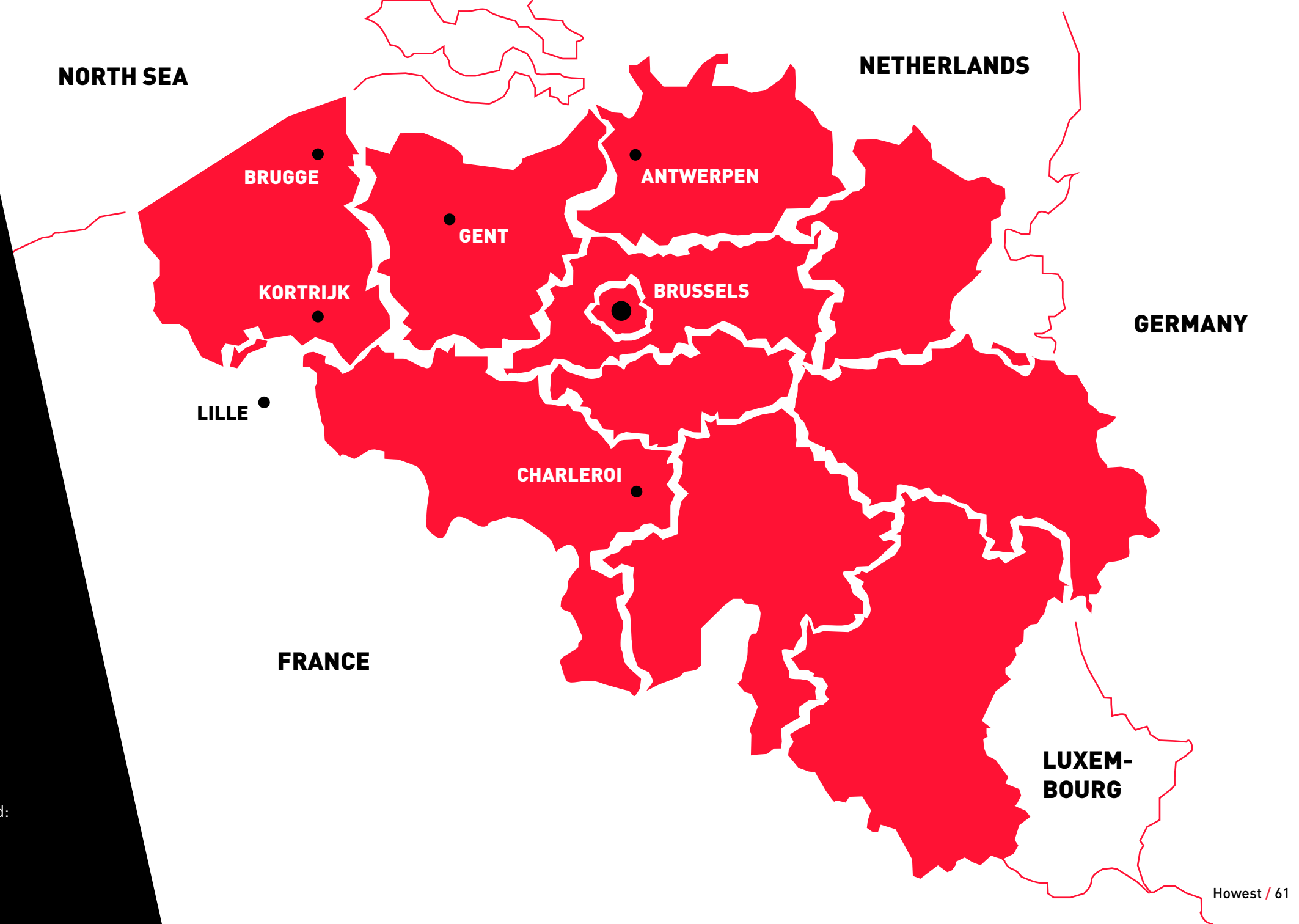
Flemish cities have a rich cultural heritage and vibrant night life. Kortrijk and Brugge have an interesting mix of the old and the new. They are 45 min away from each other and less than 3 hrs away from Brussels, Paris, London or Amsterdam by train.

TRANSPORTATION

Belgium is a small country with a good public transportation system and a cycling network currently providing 3180 km of cycling pleasure in West Flanders.

FOOD

Our gastronomic reputation is well known around the world: Belgian chocolate, beer, French fries (which are actually Belgian), waffles - we cater to many different tastes.



Studying in a foreign country, getting to know new people, exploring different cultures - it's all a part of the international student life.

During your studies at DAE we hope you will discover more about your host country, its culture and history. To start you off, here are some basic facts:

652 DAYS -

A WORLD RECORD FOR BELGIUM AS THE COUNTRY WITH THE LONGEST PERIOD WITHOUT AN ELECTED GOVERNMENT.

This period started in December 2018.

281 EMBASSIES & 2500 DIPLOMATS

Brussels is the second largest diplomatic city in the world.

11,76 MILLION INHABITANTS

One of the smallest, diverse & densely populated European countries.

DUTCH, FRENCH & GERMAN

Dutch & French are official languages in the Belgian capital Brussels.

FACTS ABOUT BELGIUM

WE PAY IN
'EURO' -
€

4,5 MILLION PEOPLE SPEAK FRENCH

in the region called Wallonia.

BRUSSELS IS THE CAPITAL OF BELGIUM, FLANDERS & THE EUROPEAN UNION.

It is a major center of international politics and it hosts the **European Commission, NATO** and many other international institutions.

6,7 MILLION PEOPLE SPEAK DUTCH

in the region called 'Flanders', where Kortrijk is also situated.

HIGH STANDARD OF LIVING & EDUCATION

Belgium was recognized as

AN INDEPENDENT COUNTRY IN 1830.

The Monarchy was established in 1831 with Leopold I being the first King of the Belgians on the 21st of July.



FACTS ABOUT BELGIUM

WHAT ABOUT BELGIANS?

Family ties and friendship bonds are very important for Belgians. No wonder that Belgian students leave their student homes almost every weekend to spend time with their family members and friends.

Flemish people are known for speaking several foreign languages. Most of the people whom you will meet will speak English quite well, and most are happy to switch to English to help you out if there is anything you don't understand. You will also find many people who speak or understand French, German, Spanish, Italian and many other languages.

MORE INFORMATION:

VISIT
FLANDERS

STUDY IN
FLANDERS

TRAVELING TO BELGIUM



TRAIN

If you are traveling **from inside the EU, transportation by train is possible**. See the linked website for more information.

The **train station at Brussels-Airport Zaventem is found underground**. When your flight arrives, simply go down two levels to reach the railway platforms.

There might be a supplement to be paid on your train ticket when leaving from this airport.

When **departing from Airport Brussels-Zaventem**, you can travel to:

- **Brussels-Central**
20 min, +- 6 trains/hour
- **Ghent & Bruges**
55/90 min, +- 3 trains/hour

There is an brief overlay in Ghent to get to Kortrijk (25/35 min, 1 train/hour).

TRAINS
EU

TRAINS
BELGIUM

BUS

FLIBCO busses (= shuttle busses) offer direct transportation between different spots at advantageous prices when booked in advance.

There are **2 options to get from the Brussels-Zaventem airport to Ghent:**

- Take the shuttle bus **to Ghent** and then take a train from Ghent to Kortrijk (35min).
- Take the shuttle bus **to Lille Europe (FR)** and then take a train from Lille to Kortrijk (36 min/1h20).

WEBSITE
FLIBCO

AIRPORT
BRUSSELS-ZAVENTEM

The biggest airport in Belgium is the Brussels Airport (Zaventem). All major airlines fly to this international airport.

Easy train connection (airport to Kortrijk)

- Daily between 4:40 AM & 10:20 PM;
- Average 2/3 trains per hour;
- Duration - 1h 45min;
- 1 or 2 layovers possible.

BRUSSELS
AIRPORT

AIRPORT
BRUSSELS-CHARLEROI

The **second busiest airport in Belgium** is Brussels Charleroi Airport. Many low-cost airlines fly to this airport, such as:

- Wizzair
- Wizzair Malta
- Air Corsica
- Volotea
- Ryanair
- Ryanair UK Limited
- Pegasus Airlines

Please bear in mind that there are fewer public transport options to Kortrijk from Charleroi, especially in case of late-evening arrivals.

CHARLEROI
AIRPORT

AIRPORT LILLE

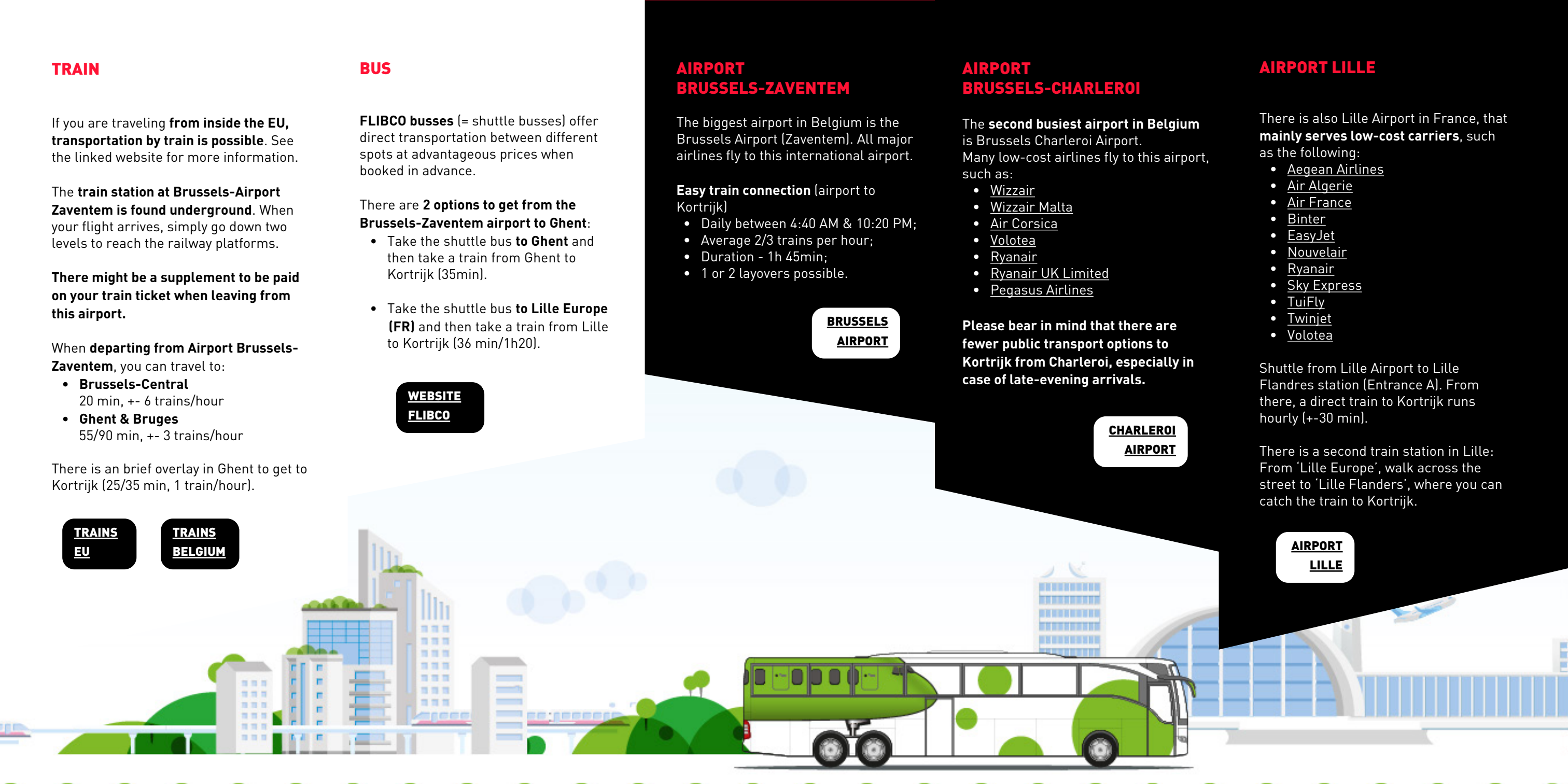
There is also Lille Airport in France, that **mainly serves low-cost carriers**, such as the following:

- Aegean Airlines
- Air Algerie
- Air France
- Binter
- EasyJet
- Nouvelair
- Ryanair
- Sky Express
- TuiFly
- Twinjet
- Volotea

Shuttle from Lille Airport to Lille Flandres station (Entrance A). From there, a direct train to Kortrijk runs hourly (+-30 min).

There is a second train station in Lille: From 'Lille Europe', walk across the street to 'Lille Flanders', where you can catch the train to Kortrijk.

AIRPORT
LILLE



WHAT KORTRIJK HAS TO OFFER



Picture by @mellovestravel

Kortrijk (in French = Courtrai) is a welcoming place for international students that offers a lot of opportunities for young people. It's **a dynamic city with 81.000 inhabitants**, which has been experiencing many changes during the past few years. The number of university students rises every year, currently counting **over 17.600 students in total**.

EDUCATIONAL INSTITUTIONS

Kortrijk is home to 4 educational institutions of higher education: Howest, Vives, KULeuven - Kulak & UGent.

LEISURE & RECREATION

Kortrijk offers plenty of leisure activities for students to unwind after classes. The city's parks, such as the 't Plein' and the 'Marionetten Park', provide green spaces for relaxation and outdoor activities.

CULTURAL ATTRACTIONS

Despite being a relatively small city, Kortrijk boasts a rich cultural scene.

NIGHTLIFE

Kortrijk has a vibrant nightlife scene, with numerous bars, pubs, and clubs catering to students' tastes. The city center is particularly lively, especially around the 'Grote Markt' area.

SPORT FACILITIES

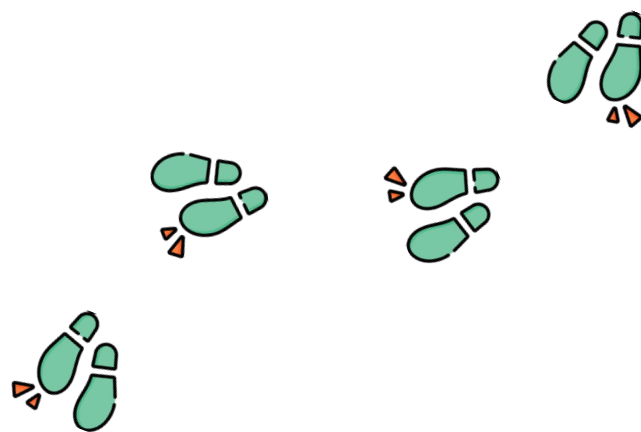
For sports enthusiasts, Kortrijk offers various facilities for staying active. There are various indoor and outdoor sports facilities, including swimming pools, fitness centers, and sports fields. Additionally, the city has cycling paths and walking trails for those who enjoy outdoor activities.

Overall, Kortrijk offers **a mix of educational, cultural, recreational, and social opportunities**.

[TOURISM
VIDEO](#)

[VISIT
KORTRIJK](#)

[WEBSITE
STUDENTENSTAD](#)



‘Metamorphosis of the city’ walk

This city walk not only **guides you through the historical city center but also highlights the metamorphosis that Kortrijk is currently experiencing.**

There is a handy map with a brief description of all the points of interest along the way. Additionally, you can download an audio version of the walk to your smartphone from the Tourism Kortrijk website, offering intriguing facts and entertaining anecdotes.

The walk begins at the Tourism Kortrijk office in the Béguinage Park and is marked by metal rivets in the ground.

WALK
KORTRIJK

KORTRIJK WEIDE

A beautiful city district which is directly linked to most of the Howest campuses, including:

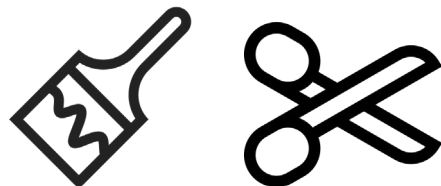
- **Nelson Mandelaplein** (event square - room for 15.000 spectators);
- **‘DEPART’** (multi-functional event hall);
- **Urban Sports Park** (skate, blade, BMX, step,...);
- **‘Hangar K’** (start-up hub focused on digital technology);
- **‘LAGO’** (Olympic swimming pool with wellness & huge waterslides);
- **Ecological park** with water garden;
- Dedicated **covered campfire site**;
- **Car-free walk & bike path** from ‘The Level’ to ‘The Penta’.

KORTRIJK
WEIDE INFO

DESIGN IN KORTRIJK

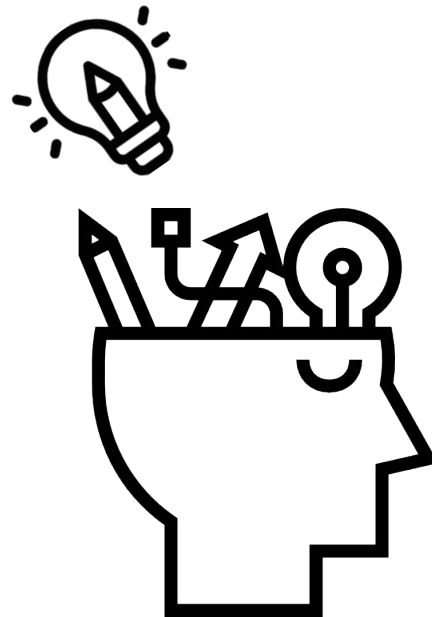
TEXTURE

The **TEXTURE Museum** tells us about the linen and flax industry. A story with very strong roots vouches for amazing craftsmanship and entrepreneurship, daring innovation and agility, as well as constant reinvention. In three rooms, set in an authentic flax dispatch building built in 1912, you will discover the revolutionary development brought about by the flax industry in this region.



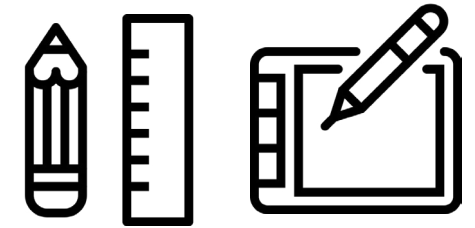
THE BUDAFABRIEK (BUDA FACTORY)

Budafabriek is a multidisciplinary forum where artists, entrepreneurs, academics, students and active citizens come together. Also home to the BUDA::lab, an open makers area of Designregio Kortrijk & Devine (Howest).



DESIGN- REGIO K

'**Designregio Kortrijk**' is a platform established in 2005 that is dedicated to fostering creativity, innovation, and entrepreneurship. They organize projects aimed at inspiring and connecting companies, designers, educational institutions, and the public sector.



DESIGN X50'

Every two years **DesignX50'**, an initiative of 'Design Regio Kortrijk', selects fifty innovative products and remarkable cases, which have been developed in the broad region around Kortrijk and are often marketed worldwide from there. All products are presented in a book. Six editions have already been published and a beautiful design presentation is what is aimed for.

WEEKS OF DESIGN

The annual Design Weeks (**WONDER**) highlights the prominent role of design education as a catalyst for regional development. Each year an exhibition presents the best student projects from the Flemish design schools.



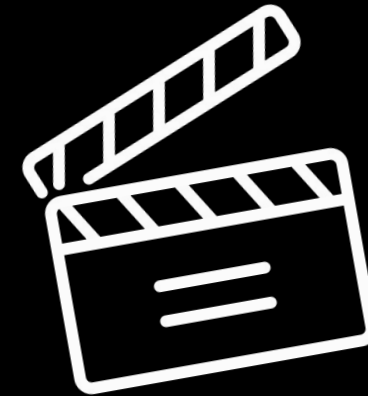
CULTURE IN KORTRIJK

STUDENT WELCOME CONCERT

Student Welcome Concert is a yearly music festival in the heart of Kortrijk. For 11 years now, students have been welcomed by this free festival in Kortrijk, a concept that has since been copied all over Belgium. On the stage you can see a mix of lesser-known bands and famous acts.

BUDA ARTS CENTRE

You will find this internationally renowned **art centre** on the island that shares its name - Buda Island. It is **the place to be to enjoy great films produced at home and abroad**. Every day it offers at least three screenings and there are also regular thematic film projects: Spanish film week, culture nights, breakfast films, Hot Docs, one-off screenings, etc. In addition, 150 contemporary performing artists can be found at work each year in the studios and theatres.



THEATRE KORTRIJK 'SCHOUWBURG'

Compelling theatre performances, intimate concerts, ground-breaking comedy,...
The Kortrijk Culture Centre is hugely diverse. **'The Schouwburg'** programme features more than just music and is virtually the largest performing arts centre in Southwest Flanders.

CONCERT- STUDIO

The **'Concert Studio'**, a beautiful concert hall, is the jewel of Muziekcentrum Track, which underwent a complete renovation in 2008. This state-of-the-art venue boasts outstanding acoustics, making it perfect for a variety of events including lectures, performances and concerts.

MUSIC IN KORTRIJK

The fact that Kortrijk is known for being the ultimate city of music in West Flanders is no coincidence. It is **home to numerous cultural institutions and musical bands**. If you enjoy playing music and/or love dancing or theatre, check Kortrijk City Guide for nice activities and events.

KORTRIJK
CITY GUIDE

ARTISTS FROM WEST-FLANDERS

Goose, Steak Number Eight, Amenra, Kiss Hiss, Channel Zero, STAKE, SX, Balthazar, Ozark Henry, Arsenal, Aborted, Hooverphonic, dEUS, Gorki, Triggerfinger, The Van Jets, Zornik, 2 Unlimited, Oscar and the Wolf,...

QUINDO

Quindo is a youth media platform in Kortrijk, where young people create radio, podcasts, and digital content while developing media skills.

It's free, and everyone is welcome during opening hours!

WEBSITE
QUINDO

ALCATRAZ

From its roots as a small one-day indoor hard rock and metal event, the Alcatraz Metal Festival (AMF) has grown into an amazing two-day metal experience with over 14.000 visitors from across Europe.

While it is not the world's biggest metal fest (and nor does it proclaim to be), AMF is the ideal escape for those who are yearning for cosiness and ambiance topped off with an excellent line-up.

WEBSITE
ALCATRAZ

WILDE WESTEN

The sometimes quirky programme (a balance between national and internationally-rising stars, alternated with noteworthy underground acts) is supplemented by the annual Sonic City Festival, a niche event that showcases a different band or musician in each edition.

They also organise workshops/info sessions for music lovers and/or novice musicians. Discounts possible with student card.

WEBSITE
WILDE WESTEN

SPORT IN KORTRIJK

STUDENTAPP

Discover **discounted sports options** like swimming, fitness, climbing, skating, and padel in Kortrijk, all available through the Student App (see pages 34-35 of this guide for more information).

[STUDENT APP](#)

[FAQ APP](#)

SPORTPLUS CARD

The sport options for students in Kortrijk are offered by Howest in collaboration with the city of Kortrijk and Kortrijk Student City. You can buy a **SPORTPLUS CARD (€ 5)**, which you can use to enjoy affordable sport options (under 26y /old):

- **Unisport** (1 sport) - **€ 43** (1y) / **€ 22** (3m)
- **Multisport** (all sports, except fitness) - **€ 56** (1y) / **€ 28** (3m)
- **Fitness** (fitness & all other sports) - **€101** (1y) / **€ 50** (3m)

[BUY CARD HERE](#)

The city of Kortrijk boasts a variety of facilities catering to skateboarding, scooter riding, rollerblading, and biking enthusiasts. Notably, Kortrijk holds the distinction of **being the first city in Belgium to introduce a skate bowl.**

As you make your way to this destination, you'll also come across a basketball court, conveniently located just a stone's throw away from 'The Level'.

IJzerkaai,
8500 Kortrijk



DAE CLUBS & ACTIVITIES

You'll be updated on all the different clubs and activities, which are free to access, that DAE has to offer through the **'DAE Active' Discord server.** There is the ability to join different channels based on your current interests.

SHOPPING IN KORTRIJK

In the **car-free pedestrian zone** in the city centre, you will find a wide variety of shops, from major chains to cosy boutiques. Below, you'll find all the information you'll need regarding our largest shopping centres in the area.

K IN KORTRIJK

An impressive, hypermodern shopping centre created with 34,000 m² of shopping space right in the heart of the city. It offers a mix of home decor, fashion, and electronic items. Events are regularly held here.

Centre open – Mon. to Sat.: 10:00 AM to 7:00 PM
Supermarket open – Mon. to Sat.: 8:00 AM to 7:30 PM
Sun.: 8:00 AM to 6:00 PM

RING SHOPPING CENTRE

This centre offers a range of fashion, leisure, decoration, personal care and catering establishments with well-known names such as Albert Heijn, Hema, C&A, JBC, H&M, Coolcat&, Delhaize and Kruidvat etc...

Centre open – Mon. to Sat.: 10:00 AM to 7:00 PM
Supermarket open – Mon. to Sat.: 10:00 AM to 8:00 PM
Closed on Sundays

Biking distance from 'The Level' is 11 min.





COST OF LIVING

Tuition fee for the academic year 2024-2025 is € 1116 for EEA students, and € 7116 for non-EEA students.

NON-EEA STUDENTS

Will also have to arrange a proof of financial means to support your stay in Belgium. This can be done through a **‘Blocked Account’**. For this academic year, those students will have to transfer **€ 11.000** as a proof of solvency (to cover your cost of living in Belgium). **This money will be paid back monthly to your bank account that you will have to open once you arrived in Belgium.**

More info to be found in the mail you received from Admissions when you first registered.

[MORE
INFO](#)

[EMAIL BLOCKED
ACCOUNT](#)

RECOMMENDED BUDGET

We recommend a budget of +- **€ 900 to € 1350 a month**, or € 10,800 to € 16,200 for 12 months to cover your year of study, **excluding tuition fees:**

- **€ 550** (on average) monthly housing costs for accommodation & utility bills;
- **€ 450-€ 750** monthly living costs for food, social life, transport etc.

On average, you can expect to spend per month approximately:

- € 270 on food
- € 100 on social life
- € 20 on printing costs
- € 81 (every 3 months) on public transport
- € 6 on bike rental
- € 350 & €650 on a student room. Cheaper ones are becoming more difficult to find.

EXTRA EXPENSES

The amount you spend during your time here will vary based on your lifestyle and spending preferences.

For instance, housing costs can vary significantly, and if you intend to travel frequently, you'll need to budget for additional expenses. **Keep in mind that during your initial month here, there may be additional costs** for temporary accommodation, deposits, clothing, and essential items like kitchen utensils and furniture.

You can reduce these expenses by shopping at budget-friendly supermarkets and exploring student-friendly establishments.

With rising energy costs, it's wise to consider adopting more economical living habits.

OVERVIEW COSTS

Click on the following link to access tables that demonstrate the estimated cost of living in Kortrijk. These tables cover various expenses, including accommodation, everyday living costs, and transportation expenses.

[WEBSITE
NUMBEO](#)



MOBILITY



BUS

There are **2 options for discounted bus fares:**

1 - BUZZY PASS

For 18-to- 24-year-olds, unlimited travel at the following cost (+ €6 admin. fees):

- € 33 - 1 month
- € 81 - 3 months
- € 215 - 12 months

BUZZY
PASS

2 - BUSPAS KORTRIJK

A bus pass with which you can ride on every bus within the territory of greater Kortrijk, for € 10 (+ €6 admin. fees).

BUSPAS
KORTRIJK

HOWEST MOBILITY



TRAIN

Certificates for a train subscription can be downloaded at the time of final enrolment on the Howest programme 'Ibamaflex'. This allows you to purchase a NMBS school subscription or campus card and travel at student rate (below 26 y/o):

- Choose between 1, 3 or 12 months of unrestricted travel when commuting to school
- In 2nd or 1st class
- Rechargeable MoBIB card
- Renew your Student Season Ticket online, at the NMBS ticketing machines or at the ticket counter
- Possible to combine several season tickets (also with Student Multi)

SEASON
TICKET

STUDENT
MULTI



CAR

Bringing your car to Kortrijk can provide you with the freedom to explore neighboring countries. However, it's important to note that free parking spaces in Kortrijk are limited.

These are a few parking options:

1 - FREE PARKING HOWEST

- Nr. 3 - student card to access
- Nr. 4 - free access

Address

Graaf Karel de Goedelaan, 8500 Kortrijk

2 - PARKING ' BUDABRUG'

You can apply for your pass at the reception desk of 'The Level'. You will need to present photo identification, car license plate and your student card.

Fees

- € 35 /month +
- € 15 entrance badge fee



BIKE

1 - 'MOBIEL'

- Rent normal bike € 8 /month
- Rent electric bike € 49 /month
- Warranty € 30
- Administrative cost € 21

Wear and tear defects are covered by Mobiel. Damage caused by the student is their responsibility.

WEBSITE
MOBIEL

2 - BUY SECOND-HAND

WEBSITE
KRINGWINKEL

WEBSITE
2DEHANDS

FACEBOOK
MARKETPLACE



BLUE BIKE

With a blue bike card you can reserve a bike in 110 different locations in Belgium.

In Kortrijk these are the current rates for normal bikes (e-bikes have other rates):

- € 12 - annual Blue-bike membership fee
- € 2,5 - first 24h
- + € 5 - 24h / 48h
- + € 10 - 48h / 72h
- + € 15 - +72h, per 24h

[WEBSITE](#)
[BLUE-BIKE](#)

[PRICING](#)
[BLUE-BIKE](#)



KORTRIJK FIETST

Exploring the city, quickly getting to your next appointment, or running errands, the bicycle is THE perfect mode of transportation in Kortrijk.

Most places in Kortrijk are reachable by bike in about 15 minutes.

In 2020, **Kortrijk was named Flanders' best cycling city**, and the city is committed to staying a true cycling city. With an extensive cycling zone, safe cycling connections, bike-sharing, bike pumps, and more to come.

Would you like a tailor-made plan of where to explore by bike? Want to get lost in the beautiful scenery of West-Flanders? Check out Kortrijk's own cycling guide, offering a multitude of routes, tips and tricks!

[KORTRIJK](#)
[FIETST](#)

USEFUL INFORMATION

CLIMATE AND CLOTHING

SUMMER - June to August

Expect mild temperatures ranging from 15°C to 32°C (59°F to 89°F). Opt for lightweight attire like t-shirts, shorts, skirts, and dresses. Carry a light jacket or sweater for cooler evenings or sudden weather changes.

AUTUMN - September to November

Temperatures drop, averaging from 10°C to 20°C (50°F to 68°F). Layer up with long-sleeved shirts, sweaters, jeans, and trousers. Be prepared for rain with a waterproof jacket or coat and sturdy footwear.

WINTER - December to February

Cold temperatures range from 0°C to 7°C (32°F to 45°F) and may dip below freezing. Bundle up in heavy sweaters, coats, scarves, gloves, hats, and thermal undergarments. Keep feet warm and dry with waterproof, insulated boots.

SPRING - March to May

Temperatures fluctuate between 5°C to 15°C (41°F to 59°F) with frequent rain showers. Dress in light layers such as long-sleeved shirts, light jackets, jeans, and trousers. Carry an umbrella or waterproof jacket for unpredictable weather.

Overall, we recommend to pack a mix of clothing suitable for a variety of weather conditions, including lightweight garments for summer, layered clothing for autumn and spring, and warm, waterproof attire for winter.

[COMFORT](#)
[WASH](#)

[LAUNDROMAT](#)
[WASSALON](#)

[LAUNDROMAT](#)
[WASSERETJE](#)

IN CASE OF ILLNESS

By taking these proactive measures and familiarizing yourself with healthcare resources in Kortrijk, you can better navigate any medical situations that may arise.

Howest - Health Services

All Howest campuses have **fully-equipped first aid rooms** with permanent staff members able to administer first aid.

General Practitioner (GP)

Upon arrival in Kortrijk, register with a local **general practitioner (GP) or family doctor**. Your DAE Community Managers can assist in finding an English-speaking GP. Schedule appointments with your GP for medical consultations or treatment in non-emergency situations.

Hospitals

Familiarize yourself with nearby hospitals like **AZ Groeninge** in Kortrijk. They provide medical care for a range of conditions, including urgent care services for non-life-threatening emergencies.

Medication & Prescriptions

Ensure you have an ample supply of medication for pre-existing conditions or **obtain a prescription** that can be filled locally. Pharmacies in Kortrijk can provide prescription medications after consulting with a GP and over-the-counter remedies for common ailments.

Emergency Services

In case of a medical emergency requiring immediate attention, dial the **European emergency number 112** (free of charge) to connect with ambulance, police, or fire department services.

Emergency Contacts

Keep a list of emergency contacts, including your DAE Community Managers, local healthcare providers, peers, and your embassy or consulate in Belgium for assistance & guidance during medical emergencies or health-related concerns.

Health Insurance

Understand the coverage details of your health insurance, including medical services and reimbursement procedures.

INTERESTING WEBSITES

To look for **GP's, dentists, other specialist doctors & pharmacies**, refer to the following websites:

[ROSA](#)
[.BE](#)

[DOCTOR](#)
[ANYTIME](#)

The 'Wachtdienst' website helps you find which pharmacy, doctor, or dentist **is on call near you outside of regular hours, including evenings, weekends, and holidays**.

[WEBSITE](#)
[WACHTDIENST](#)

Pharmacies follow regular shop hours on weekdays and are often open on Saturday mornings. Details about the pharmacy on night duty are usually posted on the pharmacy's window. More info (in Dutch and French):

[PHARMACIE](#)
[.BE](#)



ADDRESSES & WEBSITES

Howest Student Support Services (STUV0)

Graaf Karel De Goedelaan 32, 8500 Kortrijk

Student Administration Office – The Penta

Sint-Martens Latemlaan 1B, 8500 Kortrijk

School & Media Library – The Penta

Sint-Martens Latemlaan 1B, 8500 Kortrijk

IT Support - The Core

Sint-Martens Latemlaan 2B, 8500 Kortrijk

Thebulletin.be

A platform for Belgium's international community

Visitflanders.be

Tourism in Flanders

Studyinflanders.be

PHONE NUMBERS



078 170 170

Card stop –
When payment card stolen/lost



112

EU emergency –
There is also an [app](#)

MORE
NUMBERS



101

Police



100

Ambulance & Fire dep.

ADDRESSING LECTURERS

A useful piece of information, which varies from culture to culture, is how to address your lecturers here at DAE.

As a general rule, it is advisable to call your lecturers “Sir” or “Miss/Mrs.” At DAE, there is no need to call your lecturer “Professor” (this is more common within larger universities in Flanders). Each lecturer is different – some prefer to be called by their first name, while others prefer to be addressed more formally. Most teachers will inform their students regarding how they would like to be addressed during the first class meeting. When in doubt, it is best to ask respectfully.

It is also important to respect your lecturer's privacy, which means no messaging through social media (including Discord).

Please keep your communication professional when communicating with lecturers; standard punctuation, capitalization, spelling, and grammar are expected when writing an email. A professional writing style and moderate formality show your respect and distinguish an email from a text message.

So, using emojis, acronyms, abbreviations, etc., is okay when texting your friends, though this is a no-go when communicating with your lecturer. Don't forget to also use a salutation and signature.

By sticking to these guidelines, you can ensure that your message will come across appropriately and respectfully.

Good communication is a crucial tool for success!



SORTING WASTE

Belgium is known for its **efficient waste management system and commitment to recycling**. To adhere to local regulations, avoid fines and contribute to sustainability efforts, follow this overview:

Separation of Waste

In Belgium, waste is typically separated into several categories: recyclables, organic waste, residual waste, and sometimes hazardous waste.

Color-Coded Bins

Residential areas, public spaces, and institutions in Belgium usually provide color-coded bins, containers or bags to facilitate waste separation.

- **Black - Gray**
Typically used for household waste;
- **Blue**
For recyclables like plastic, metal, and certain types of packaging;
- **Green**
For organic waste;
- **Yellow**
Often designated for paper and cardboard.

Collection Schedule

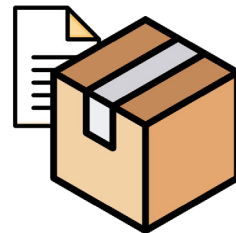
Waste collection schedules vary depending on the municipality or region in Belgium.

Click on the category titels for more information →



HOUSEHOLD WASTE

- Non-recyclable waste, will be burned
- Dark grey/black bag (buy in most supermarkets)
- Weekly pick up by the city
→ [timetable](#)



PAPER & CARDBOARD

- Pick-up every 2 weeks by the city
→ [timetable](#)



PMD

- Plastic packaging, Metal packaging & Drink cartons
- Blue bags (buy in most supermarkets)
- Pick-up every 2 weeks by the city
→ [timetable](#)



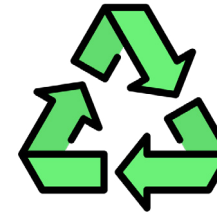
GFT

- Organic waste (vegetables, fruit & garden waste)
→ [Compost](#) / Household waste
→ [Mobile recycle point](#)
→ Or 'container park'



GLASS

- Transparent colored or clear glass
→ [Glass bulbs](#) in the street



RECYCLE POINTS

- Reusable textile
→ [Kringloop](#) / [drop-off points](#)
- Old or expired medication → [pharmacies](#)
- Discarded electrical/electronic appliances
– batteries – lightbulbs
→ [Recupel](#) drop-off points



CONTAINER PARKS

- Recycling centres where people can bring (free or for a fee) their large domestic waste, small dangerous waste & other specific waste fractions (construction debris, wood,...)

**Thank you for reading
& see you soon!**

**DAE
SOCIAL MEDIA
PLATFORMS**